

FireClass

Introducing a new class  
of fire detection

**Fire Detection** Product Catalogue





## FireClass

Hillcrest Business Park  
Cinderbank, Dudley  
West Midlands  
DY2 9AP  
United Kingdom

Tel: +44 (0)1384 453985  
Fax: +44 (0)1384 458972

[www.fireclass.net](http://www.fireclass.net)

[fireclasssales@tycoint.com](mailto:fireclasssales@tycoint.com)

Unit 6, West Point Enterprise Park  
Clarence Avenue  
Trafford Park  
Manchester  
M17 1QS  
United Kingdom

The images shown in this catalogue are merely indicative and FireClass reserves the right to modify at any time the characteristics of the products here represented.

Some products are not available in all countries. Contact your local distributor for details.

# Introducing a new class of fire detection **FIRECLASS**

03



## What is FireClass?

FireClass is a revolutionary new class of commercial fire detection products.

FireClass consists of a comprehensive range of fully approved quality products designed and manufactured in Europe.

FireClass is designed to appeal to both the end user and installer with the latest fire detection technology packaged in an easy to install, out-of-the box, digital open-protocol solution.

A new class of fire detection designed to meet all of your needs from a single supplier.

## Comprehensive Range

FireClass provides a broad range of detection solutions. FireClass conventional fire detection products range from the low cost Duo-CEL 2 zone panel to the powerful and expandable 32 zone Precept EN Panel.

These are complemented by an enviable range of conventional fire detectors and accessories focussed on providing comprehensive protection and minimum false alarms.

FireClass addressable fire detection product range from the easily installed out-of-the box FC501 to the 4 Loop FireClass 64 and FireClass 240 networked open protocol fire panels with optional FireClass Graphics.

FireClass addressable uses a powerful digital open protocol for high reliability and flexibility in installation.

## FireClass - A New Class of Fire Detection.....

### Fully Approved

In order to ensure peace of mind for both the installer and end user, FireClass products are third party approved and certified to relevant European standards. FireClass approvals go beyond the minimum requirements including EN54 approval of the FireClass network, EN54 detector approval in all detection modes and the Prescient III Extinguishing Panel having EN54-2, EN54-4 and EN12094-1 approval.



### Digital Open Protocol

FireClass provides an open protocol solution widely available throughout the market via trade and distribution specialists ensuring freedom of choice for installers and end users.

Developed originally for the harsh marine environment FireClass uses a robust digital protocol that supports various wiring configurations to simplify installation and retrofit applications often problematic for competitors protocols.

### Easy to Install

Ease of installation and engineering underpins the concept of FireClass. It runs through all the products. For example panel installation is simplified by allowing electronics to be easily removed for first fix and simple user friendly configuration software and fault finding tools speed up commissioning.

Field device installation is simplified through the flexibility of the FireClass digital protocol and other features such as the ceiling tile adaptor that can significantly speed up detector installation.



# CONTENTS

Introduction to FireClass Conventional Range	8
FireClass Conventional Range Overview	9
Duo-Cel Conventional Panel	10
Precept EN Conventional Panel	11
Precept EN13 54-13 Conventional Panel	12
Prescient III Gas Extinguishing Panel	13
Prescient III Gas Extinguishing Status Units	14
600 Series Conventional Detectors	15
Conventional Detector Ancillaries	16
Conventional Manual Call Points and Ancillaries	17
Conventional Sounders and Beacons	18
Door Release Units and Remote Indicator	19
Introduction to FireClass Addressable Range	22
FireClass Addressable Range Overview	23
FireClass FC501 Addressable Panel	24
FireClass 32 Addressable Panel	25
FireClass 64 Addressable Panel	26
FireClass 240 Addressable Panel	27
FireClass Addressable Panel Expansion	28
460 series Addressable Detectors	29,30
Addressable Detector Ancillaries	31
Addressable Manual Call Points and Ancillaries	32
Addressable Sounders	33
Addressable Ancillary Modules	34,35
FireClass 490ST Service and Programming Tool	36
FireClass Graphics	37
Air Sampling Unit	38
Air Sampling Unit Accessories	39
Beam Detection	40
Power Supply Units and Batteries	41
Installation Accessories	42
Detector Test Equipment	43
Notes	44,46







## **FireClass** Conventional Range



## Introduction to FireClass Conventional Range

A new class of Fire Detection



### Comprehensive Range

The FireClass conventional range offers the user a choice of control panel widely known and used throughout the world, ranging from the basic Duo-CEL 2 zone panel up to the versatile and adaptable Precept EN 32/zone panel.

The conventional control panel range is also complemented by the FireClass Prescient III Extinguishing Panel designed to provide ease of installation by allowing most industry conventional detectors to be connected to each zone.

### Full Approvals Provide Peace of Mind

In order to ensure peace of mind for both the installer and end user, FireClass products are third party approved and certified to the relevant European Standards. FireClass approvals go beyond the minimum requirements including EN54 and CPD approval of the FireClass Precept EN and Duo-CEL, and the Prescient III Extinguishing Panel having EN54-2, EN54-4 and EN12094-1 approval. EN54 detector approval is also provided for all detectors in the FireClass range.

### Enviably Point Detector Range

The FireClass range of conventional detectors can be used in all fire risk situations, from slow smouldering fires using CO technology to the fast flaming fires using the unique High Performance Optical detector, which emulates the characteristics of the ionisation detector, without the need for radioactive components.

High Performance Optical Multisensor is a general purpose detector that can be used as an ionisation detector replacement.

Carbon Monoxide/Heat Multisensor provides a high level of protection in environments where traditional smoke detectors are unsuitable.

Point Infrared Flame detector provides a low cost solution and early detection of liquid fuel fires.

### Easy to Install

All FireClass conventional panels offer a user friendly, out-of-the box feel.

Both the Duo-CEL conventional and two wire offer a plastic enclosure comprising of a single cassette style motherboard, allowing for complete removal during installation.

The Precept EN and Prescient III are supplied in a robust metal housing, but still offer a chassis style design so the motherboard and power supply can be removed to allow for installation.







### Duo-CEL

- Low cost EN54 and CPD approved introductory panel.
- Available in 2,4 and 8 zone versions.
- Key activated controls eliminating the need to remember codes.
- Optional repeater available.
- Versatile easy to install enclosure.



### Precept EN

- Fully featured range of engineered conventional panels.
- Available in 2,4,8,16 and 32 zones.
- Up to 5 repeaters per panel connected on a two wire bus.
- Precept offers extensive expansion capabilities from relay modules to alarm circuit expansion.
- EN54-13 approved version available



### Prescient III

- EN54 approval for detection capability.
- EN12094-1 approval for gas releasing capability.
- Wide range of control panel status indicator units available in standard and weatherproof enclosures.



### FireClass 600 Series Detection

- Comprehensive low cost range of conventional detectors with advance technology.
- Combined optical/heat detector ideal for ionisation replacement.
- Advanced carbon monoxide detector.
- Solar blind infrared flame detector.



### Detector Bases and Accessories

- Detector bases and accessories.
- Range of standard bases, sounder bases and sounder/beacon bases complemented by the time saver ceiling adaptor allowing fast and easy installation.



### Call Points

- The most recognisable indoor and outdoor callpoint.
- Available for both standard and 2 wire installations.
- Supplied with or without back box for easy installation.



### Sounders and beacons

- Comprehensive range of sounders and beacons.
- Wide selection of sounds to match new and existing applications.
- Visual alarms available in the sounder/beacon range.



### Door Release

- Both 24Vdc and 230Vac low cost units available.
- Finishes available in plastic, chrome or brass.
- Essential piece of fire protection equipment for most installations.



### Remote Indicator

- Commonly used when line of sight is not available to the detector.
- Discreet devices used to reduce the fire search time.

# 10

## FireClass Conventional Range

A new class of Fire Detection

### Duo-Cel Conventional Panel



#### General Features

- 2,4 & 8 Zone versions available in an aesthetically pleasing design.
- Sturdy, flame retardant, ABS plastic enclosure with controls, zone text insert and indications overlay.
- Easy to install, program and use. Key operated controls access.
- Panels can be surface or semi flush mounted and have 20mm cable gland breakouts.
- Comprehensive LED indications and user/engineer controls.
- Low standby power consumption.
- 4 Sounder circuits 4 & 8 zone, 2 on 2 zone panel. Zonal & Alert sounder options configurable.
- 1.5A switched mode power supply with temperature compensated battery charging.
- Enclosure houses 3.4Ah SLA batteries as standard.
- 8 Zone repeaters available with 24V or mains operation (suitable for 4 & 8 zone panels only).
- Short circuit zone activation option (Global).
- End of Line zone resistor option for retrofitting (Global).

#### Product Order Codes

**508.031.702** Duo-Cel 2 Zone Panel  
**508.031.703** Duo-Cel 4 Zone Panel  
**508.031.704** Duo-Cel 8 Zone Panel

**508.031.705** Duo-Cel 8 Zone AC Repeater  
**508.031.706** Duo-Cel 8 Zone DC Repeater





## Precept EN Conventional Panel



### General Features

- From 2 to 32 zones (up to 32 detectors per zone).
- EN54-2 / CPD approval (BSI).
- Comprehensive end-user facilities (access level 2).
- Designed & built using the latest technology for optimum performance and consistently high quality.
- Extensive configurable facilities for the engineer via DIP switches.
- 4 alarm circuits as standard (4 zone panel and above).
- Up to 5 fully-functional repeaters - 2-wire RS485.
- Range of EN54 compliant power supply modules, designed to meet the specific load requirements of each size panel.
- Zonal one-man test feature and sounder one-man test facility.
- Short circuit to fire setting for use with older type detectors.
- Panel inputs for class change, evacuate, silence alarms, system reset.
- 3 open-collector outputs for evacuate, buzzer active, disablement active.
- Auxiliary supply output - monitored fuse.
- Panel expansion boards for open collector, relay and alarm outputs (for 8 zone panel or higher).
- Optional timer clock/counter module.
- Optional foreign languages text insertable versions available.
- Optional semi-flush and fully flush mounting bezels available.

### Product Order Codes

<b>508.032.701</b>	Precept EN 2 Zone Panel	<b>508.032.707</b>	Precept EN 8 Zone AC Repeater
<b>508.032.702</b>	Precept EN 4 Zone Panel	<b>508.032.708</b>	Precept EN 16 Zone AC Repeater
<b>508.032.703</b>	Precept EN 8 Zone Panel	<b>508.032.709</b>	Precept EN 32 Zone AC Repeater
<b>508.032.704</b>	Precept EN 16 Zone Panel	<b>508.032.710</b>	Precept EN 8 Zone DC Repeater
<b>508.032.706</b>	Precept EN 32 Zone Panel	<b>508.032.711</b>	Precept EN 16 Zone DC Repeater
		<b>508.032.712</b>	Precept EN 32 Zone DC Repeater

Please contact your sales team for information on Expansion modules and Ancillaries for the Precept EN Range.

# 12

## FireClass Conventional Range

A new class of Fire Detection

# Precept EN13 Conventional Panel EN54-13 approved



## General Features

- From 2 to 32 zones (up to 32 detectors per zone).
- EN54-13, EN54-2 / CPD approval (BSI).
- Comprehensive end-user facilities (access level 2).
- Designed & built using the latest technology for optimum performance and consistently high quality.
- Extensive configurable facilities for the engineer via DIP switches.
- 4 alarm circuits as standard (4 zone panel and above).
- Up to 5 fully-functional repeaters - 2-wire RS485.
- Range of EN54 compliant power supply modules, designed to meet the specific load requirements of each size panel.
- Zonal one-man test feature and sounder one-man test facility.
- Short circuit to fire setting for use with older type detectors.
- Panel inputs for class change, evacuate, silence alarms, system reset.
- 3 open-collector outputs for evacuate, buzzer active, disablement active.
- Auxiliary supply output - monitored fuse.
- Panel expansion boards for open collector, relay and alarm outputs (for 8 zone panel or higher).
- Optional timer clock/counter module.
- Optional foreign languages text insertable versions available.
- Optional semi-flush and fully flush mounting bezels available.

## Product Order Codes

<b>508.032.025</b>	Precept EN 13 - 2 Zone Panel	<b>508.032.707</b>	Precept EN 8 Zone AC Repeater
<b>508.032.026</b>	Precept EN 13 - 4 Zone Panel	<b>508.032.708</b>	Precept EN 16 Zone AC Repeater
<b>508.032.027</b>	Precept EN 13 - 8 Zone Panel	<b>508.032.710</b>	Precept EN 8 Zone DC Repeater
<b>508.032.028</b>	Precept EN 13 - 16 Zone Panel	<b>508.032.711</b>	Precept EN 16 Zone DC Repeater
		<b>508.032.712</b>	Precept EN 32 Zone DC Repeater



Please contact your sales team for information on Expansion modules and Ancillaries for the Precept EN Range

## Prescient III Gas Extinguishing Control Panel



### General Features

- Approval to BS EN 12094-1:2003 + CPD.
- Approval to BS EN 54-2 and 4.
- Monitored inputs for gas discharged, gas low, isolation valve closed/abnormal, gas trapped in manifold.
- Control inputs for auto/manual, gas hold, gas abort.
- 1 minute actuator cut off option.
- Monitored actuator/solenoid release.
- Common fire, fault, relay / monitored output facilities.
- 1st stage, 2nd stage, 3rd stage and gas discharged relay / monitored output facilities.
- Reset relay facilities.
- Single or double knock operation.
- Pre-discharge delay adjustable from 0 to 60 seconds with visible countdown timer.
- Discharged indication with or without pressure switch.
- Inhibit silence alarms until gas discharged.
- Option for rapid buzzer pulse when gas imminent.
- One man zone and sounder test General Features.

### Product Order Codes

**508.033.751** Prescient III Gas Extinguishing Control Panel



## Gas Extinguishing Status Units

### General Features - SLU1

- Two core data link between panel and status unit.
- Two core power connection between panel and status unit.
- Indication of events/status only unit.



### General Features - SLU2

- Two core data link between panel and status unit.
- Two core power connection between panel and status unit.
- Indication of events/status.
- Manual Release.
- Auto/Manual Keyswitch.



### General Features - SLU3

- Two core data link between panel and status unit.
- Two core power connection between panel and status unit.
- Indication of events/status.
- Manual Release.
- Auto/Manual Keyswitch.
- Countdown timer.
- Abort and hold off switch.



### Product Order Codes

- 508.033.752** Status Lamp Unit Indication Only (SLU 1).
- 508.033.753** Status Lamp Unit with Indication, Manual Release and Auto/Man Switch (SLU 2).
- 508.033.754** Status Lamp Unit with Indication, Manual Release, Abort, Timer Hold and Auto/Man Switch (SLU 3).
- 508.033.755** Status Lamp Unit with Indication and Auto/Man Switch - Weatherproof (SLU 4).

## 600 Series Conventional Detectors

### General Features

- Unique early detection enhanced CO fire detector.
- Intelligent universal HPO smoke detector.
- Low profile, discreet and unobtrusive.
- Superior performance and reliability.
- Designed for fast, easy installation.
- Integral and remote alarm LED.
- Series of product approvals.

### Detector Identification



**Optical Smoke Detector** - A detector ideal for use with slow burning or smouldering fires.

**516.600.001** 601P Optical Smoke Detector



**High Performance Optical Detector** - A combined Smoke and Heat Detector ideal for use with slow smouldering fires or open flaming fires.

**516.600.002** 601PH High Performance Optical Detector



**Heat Detector** - A combined fixed and rate of rise heat detector ideal for use where smoke detectors cannot be situated.

**516.600.003** 601H-R Heat Detector - Rate of Rise  
**516.600.214** 611H-F Heat Detector - Fix temperature



**Enhanced Carbon Monoxide Detector** - A detector that provides very early warning for slow smouldering fires ideal for sleeping risks.

**516.600.004** 601CH Enhanced Carbon Monoxide Detector



**Solar Blind Infra Red Flame Detector** - A detector that is ideal for protecting large open areas without sacrificing speed of response to flaming fires.

**516.600.006** 601F Solar Blind Infra Red Flame Detector

## Conventional Detector Ancillaries

### Standard Bases



#### General Features

- Aesthetically discreet.
- Superior performance and reliability.
- Designed for rapid installation.
- Remote LED connection.

#### Product Order Codes

- 517.050.041** 4B Detector Base  
**517.050.045** 4B-D Conventional Diode Base

### Standard Sounder Bases and Relay Base



#### General Features

- Aesthetically discreet.
- Superior performance and reliability.
- Adjustable Volume Control.
- Selectable Tones.
- Extra Low Current option.
- Optional Sounder cap for standalone use.
- Relay Base for local control.

#### Product Order Codes

- 577.001.035** 601SB Conventional Sounder Base  
**577.001.037** 601SBD Conventional Diode Sounder Base  
**557.001.040.Y** Sounder Base White Cap  
**568.001.018** MC600 Relay Base



### Standard Sounder Beacon Bases

#### General Features

- Aesthetically discreet.
- Superior performance and reliability.
- For use where disabled requirements apply.
- Available for Standard Conventional and Two Wire Panels.

#### Product Order Codes

- 576.501.250** Squashni G3/AV Sounder/Beacon Base  
**576.501.255** Squashni G3/AV Blanking Cap (pack of 5)



### Ceiling Tile Adapter Kit

#### Product Description

The Time Saver Ceiling Tile Adaptor is used with the 4B 4" detector base snap fit base and consists of three parts, a bezel and clamp that are fitted to the ceiling tile and a back-box that carries the detector and base assembly.

The Ceiling Tile Adaptor requires a 127mm diameter hole to be cut into the ceiling tile to allow an easy fit and flawless finish.

#### Product Order Codes

- 517.050.060** Ceiling Tile Adaptor Kit (consists of 1 x 517.050.056 and 1 x 517.050.057)  
**517.050.056** CTA-BB CTA Back Box  
**517.050.057** CTA-BC CTA Bezel and Clamp





## Conventional Manual Call Points and Ancillaries

### General Features

- Surface or Flush Mounting.
- Test key facility, speeds maintenance visits.
- Optional transparent hinged cover.
- Hazardous area models available.
- IP67 Waterproof models for external applications.

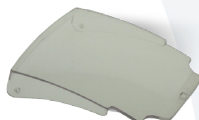
### Product Order Codes



- 2501012** Conventional Manual Call Point with Glass Element (No Back Box)
- 2501013** Conventional Manual Call Point with Glass Element (With Back Box)
- 2501233** Conventional Manual Call Point with Plastic Element (No Back Box)
- 2501234** Conventional Manual Call Point with Plastic Element (With Back Box)
- 515.001.021** Standard red surface mounting backbox for MCP and CP indoor callpoint



- 2501176** Conventional Weatherproof Manual Call Point



- 2501014** Spare Glasses for Manual Call Point (Pack of 5)



- 2501101** Manual Call Point Plastic Hinged Cover



- 2501040** Spare Manual Call Point Keys (Pack of 10)

- 515.001.127** Spare Plastic Element for Manual Call Point

## Conventional Sounders and Beacons

### General Features

- High sound output characteristics.
- Low current consumption.
- Easy to install, low installation costs.
- Weatherproof units for outdoor use.



### Product Order Codes

<b>2601012</b>	6" Electronic Bell
<b>2601015</b>	6" Electronic Weatherproof Bell
<b>2601016</b>	8" Electronic Weatherproof Bell

### General Features

- Wide range of electronic sounders.
- High sound output characteristics.
- Low current consumption.
- Clean lines, modern styling.
- Easy to install, low installation costs.
- Weatherproof units for outdoor use.



### Product Order Codes

<b>2601009</b>	Roshni Electronic Sounder
<b>2601011</b>	Banshee Warbler

### General Features

- Wide range of electronic sounder/beacons.
- High sound output characteristics.
- Low current consumption.
- Clean lines, modern styling.
- Easy to install, low installation costs.
- Weatherproof units for outdoor use.



### Product Order Codes

<b>2601044</b>	Flashni Electronic Sounder/Beacon (*)
<b>2601054</b>	Vantage Electronic Sounder/Beacon (*)



(\*) The beacon in this product should be used for supplementary indication purposes only. In this case the device is not required to be used as a Visual Alarm Device (VAD) and EN54-23 is not relevant to its classification.

## Door Release Units

### General Features

- Essential piece of fire protection equipment for most installations.
- Various styles and mounting methods available, including plastic, chrome and brass.
- Integrated release button as standard.
- Both 24Vdc and 230Vac low cost units available.



### Product Order Codes

**2501033**

24Vdc White Plastic Door Holder

**2501034**

230Vac White Plastic Door Holder

## Remote Indicator

### General Features

- Provides local indication of device in alarm.
- Commonly used when line of sight is not available to the detector.
- Clean and discreet finish used to reduce the fire search time.



### Product Order Codes

**2500226**

Square Remote Indicator

**2500227**

Round Remote Indicator







## **FireClass** Addressable Range



## FireClass Conventional Range

A new class of Fire Detection



### Comprehensive Addressable Range

The FireClass Addressable range of panels offer the customer a very easy to install and configure “out of the box” triple circuit single loop stand alone panel with 128 addresses and a range from a 1 loop panel up to a 4 loop panel with up to 250 addresses per loop, from 32 to 240 zones per panel and up to 7 fully functional repeaters per panel with 24 panels networked together. FireClass also offers a full range of low false alarm multi sensor detectors and an extensive array of field devices.

### Fully Approved

In order to ensure peace of mind for both the installer and end user, FireClass products are third party approved and certified to relevant European standards. FireClass approvals go beyond the minimum requirements including EN54 approval of the FireClass network, EN54 detector approval in all detection modes.

### Open Protocol Provides Freedom of Choice

FireClass provides an open protocol solution widely available throughout the market via trade and distribution specialists ensuring freedom of choice for installers and end users. Easy to use programming software is available to installers and end users, with the majority of service functions available through the panel user controls. Device configuration and text changes now also available through the panel user controls.

### Digital Open Protocol

Developed originally for the harsh marine environment FireClass uses a robust digital protocol that has been proven to withstand poor, damp and damaged cables for over 20 years.

The resilient digital protocol works on most existing cables and allows for flexible installations when T's are required. The loop can be made from spurs for a simple upgrade of conventional systems and allows up to 250 addresses per loop with 500mA for broad applications.

### Resistance to False Alarm

The range includes a high quality Optical smoke detector together with various multi sensor devices. The ultimate in false alarm resilience is provided by the triple sensing detector, combining optical, heat and carbon monoxide sensing technologies. Day/Night detection modes also allow for false alarm reduction when the building is occupied.





### FireClass 501

- Low cost entry level digital panel.
- Auto learn and auto addressing with Intelli-Zone feature
- Full out of the box functionality.
- Versatile easy to install addressable alternative to conventional.



### FireClass 32, 64 and 240

- Digital addressable panels offering 32, 64 or 240 zones.
- Up to 1000 devices per panel.
- Dedicated EN54 approved network.
- Up to 24000 devices per network.



### FireClass Graphics

- Graphical emergency management system.
- True client/server system, allowing several workstations to operate over a TCP/IP network from a single database.



### FireClass FC460 Detection

- Provides the best in class environmental and detection performance with the capability of detecting all fire types.
- Range includes an Optical/Heat Multisensor and Optical/Heat/CO triple multi sensor.
- Automatic self testing of each sensor element.
- 360 Degree alarm, fault and isolated LED on each detector.
- Six EN54 approved modes for the Optical/Heat multi sensor.
- Optical/heat multi sensor can use different modes in day/night settings.
- All optical modes have three EN54 approved sensitivities.
- Lower lifetime cost offering an extended service life.



### Detector Bases and Accessories

- Range of standard bases, isolator bases, sounder bases and sounder/beacon bases.
- Addressable functional bases can be programmed via a download to adjust volume, tone selection and flash rate complemented by the time saver ceiling adaptor allowing fast and easy installation.



### Call Points

- The most recognisable indoor and outdoor callpoint.
- Supplied with or without back box for easy installation.
- Number of accessories available.



### Addressable Modules

- Wide range of input, output and multi function modules to suit all applications.
- Universal detector module to connect two conventional circuits with detector removal monitoring and call point discrimination.
- Self powered high voltage relay that can switch mains voltage directly from a module of the FireClass loop.
- A choice of quad input/output modules designed for a variety of interfacing applications.



### Sounders and beacons

- Comprehensive range of sounders and beacons.
- Wide selection of sounds to match new and existing applications.
- Sounder and Beacon elements operated separately by the FireClass panel to facilitate most evacuation strategies.
- Volume, tone and flash rate can be configured by software individually or globally.

## FireClass FC501 Addressable Panel



### General Features

- 3 in 1 loop panel
- Up to 400mA current dynamically shared across 3 loop circuits
- Up to 128 Addresses / 32 Zones
- Easy to programme
- Out of the box, fully programmable via keypad
- Auto Addressing
- Auto Mapping with Intelli-Zone feature
- On Line Help function
- USB port dual role Host/Device to upload/download firmware, configuration, vocal messages, etc.
- Walk test function
- Loop break location
- 4000 Event Log
- On board PSTN communicator
- Optional IP board
- Up to 4 repeaters
- Fast and simple system configuration via software, also offline
- Battery/wiring calculation and customizable cables database
- Remote Real time visualization of control panel loop & zone status, etc via IP
- Easy Remote user interface with control buttons (reset, silence, evacuate)
- Multilevel map based on a tree structure
- Capability to print zone label sheet for front panel customization

### Product Order Codes

- |                    |  |
|--------------------|--|
| <b>557.200.718</b> | FC501-H Triple Circuit Single Loop Panel, 2,5A PSU |
| <b>508.031.743</b> | FC500IP3 IP Module                                 |
| <b>557.200.723</b> | FC500REP Repeater                                  |



## FireClass 32 One Loop Addressable Panel



### General Features

- Up to 250 addresses available on panel.
- 640 character display.
- Permanently displays system status.
- Displays temperature, CO level and smoke level at point in alarm.
- 3000 event log.
- Manual and Automatic walk test and reporting functions.
- Automatic battery test.
- Detector service functions.
- Front panel controls enabling text and configuration changes.
- Up to 24 panels networkable.
- Choice of up to 5 fully functional Repeaters with a maximum of 7 per panel.

### Product Order Codes

- |                    |   |
|--------------------|---|
| <b>557.200.701</b> | FireClass 32<br>1 Single Loop 32 zone panel     |
| <b>557.200.706</b> | FireClass 32RA<br>Repeater panel 32 zone 230Vac |
| <b>557.202.080</b> | TLI800EN Network Interface Card                 |



# 26

## FireClass Addressable Range

A new class of Fire Detection

# FireClass 64 Two or Four Loop Addressable Panel



## General Features

- Up to 1000 addresses available on panel.
- 640 character display.
- Permanently displays system status.
- Displays temperature, CO level and smoke level at point in alarm.
- 3000 event log.
- Manual and Automatic walk test and reporting functions.
- Automatic battery test.
- Detector service functions.
- Front panel controls enabling text and configuration changes.
- Up to 24 panels networkable.
- Choice of up to 5 fully functional Repeaters with a maximum of 7 per panel.

## Product Order Codes

<b>557.200.702</b>	FireClass 64 2 Two Loop 64 zone panel	<b>557.200.707</b>	FireClass 64RA Repeater panel 64 zone 230Vac
<b>557.200.703</b>	FireClass 64 4 Four Loop 64 zone panel	<b>557.200.710</b>	FireClass 64RD Repeater panel 64 zone 24Vdc
<b>557.202.080</b>	TLI800EN Network Interface Card		



## FireClass 240 Two or Four Loop Addressable Panel



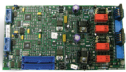
### General Features

- Up to 1000 addresses available on panel.
- 640 character display.
- Permanently displays system status.
- Displays temperature, CO level and smoke level at point in alarm.
- 3000 event log.
- Manual and Automatic walk test and reporting functions.
- Automatic battery test.
- Detector service functions.
- Front panel controls enabling text and configuration changes.
- Up to 24 panels networkable.
- Choice of up to 5 fully functional Repeaters with a maximum of 7 per panel.

### Product Order Codes

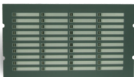
<b>557.200.704</b>	FireClass 240 2 Two Loop 240 zone panel No Zonal LED Display	<b>557.200.708</b>	FireClass 240RA Repeater panel 230Vac No Zonal LED Display
<b>557.200.705</b>	FireClass 240 4 Four Loop 240 zone panel No Zonal LED Display	<b>557.200.711</b>	FireClass 240RD Repeater Panel 24Vdc No Zonal LED Display
<b>557.202.080</b>	TLI800EN Network Interface Card		

## FireClass Addressable Panel Expansion



### XLM800

The XLM800 Loop Expansion module is used to provide an additional two loops for the FireClass 64 and FireClass 240 addressable control panels, enabling the panels to support a maximum of 4 loops, each with up to 250 addresses. These units are fitted as standard to the FireClass 64-4 and FireClass 240-4 panels.

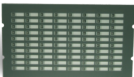


### ANN840

The ANN840 LED annunciation module, provides 40 dual LED indications (red/yellow) that can be programmed to signal alarm and fault states.

A slide in/out legend allows the user to customise the indicator labels.

The ANN840 can be driven from either the control panel or from the remote bus.



### ANN880

The ANN880 LED annunciation module, provides 80 red LED indications that can be programmed to signal various states.

The ANN880 can be driven from either the control panel or from the remote bus.



### IOB800

The IOB800 input/output expansion module is an LPCB approved board that provides 8 opto isolated digital inputs and 8 x 24Vdc relay outputs for providing I/O expansion capabilities to the FireClass control panels for interfacing to other fire protection systems and signalling devices. The IOB800 can be driven from either the control panel or from the remote bus.



### FB800

The FB800 fuse board, provides terminations for 15 fused 500mA 24Vdc output spurs from a single 24Vdc input.



### COM820

The COM820 status command module, provides 20 programmable inputs and 20 programmable outputs. Each function includes a command button and yellow status LED with removable legends.

The functionality is programmed in the FireClass control panel with the typical applications being:

- Manual/off/auto/isolate functions for evacuation or plant control.
- Selective isolate and evacuate functions for firemans' control.
- Selective plant shutdown and override functions.
- Selective system delay and timer functions.

The COM820 can be driven from either the control panel or from the remote bus.



### PRN800

The PRN800 Printer Kit is designed for use with the FireClass addressable range of control panels and is fitted to the front door of the ANC ancillary housing units.



### MPM800 Multi Purpose Interface Module

The MPM800 is used to provide various expansion capabilities via the remote bus (RBUS).

The following I/O and LED annunciator modules can be slaved from an MPM800:

- Up to 5 x IOB800 (8 in/8 out expansion board)
- One Mimic Panel (80 way LED mimic driver PCB)
- One 80 way ANN880 LED mimic\*\*
- One 40 way ANN840 LED mimic using red & yellow LEDs\*\*
- Two 20 way COM820 LED status/command modules\*\*

The MPM800 is mounted by plugging directly onto the back of those items marked \*\*



\*\* For help on the above Products please contact your Sales Representative or FireClass Technical Department.



## FireClass 460 Addressable Detectors

The FC460 series are addressable multi-sensor fire, smoke and heat detectors, which can be implemented as several modes and sensitivities by the FireClass control panels. The FC460 series are designed and approved to EN54.

The FC460 series detectors provide the latest fire detection technology in an attractive cost effective package. The FC460 series detectors are supplied in an extremely robust and reliable fully sealed construction, which has undergone stringent environmental testing. Electrical contacts are moulded into the plastic to eliminate any movement.



### Detection Modes

The FC460 range of detectors use the FireClass digital protocol to provide robust and reliable communications to the control panel. A wide range of cable types can be used and the open topology capability of the system makes it ideal for the upgrade of older systems whilst reusing the cables to reduce cost.

Whilst the optical detector can be set to three different sensitivities and the heat detector programmed in one of three different detection modes, the photo/heat multisensor has available a total of 14 approved modes/sensitivities. The photo/heat multisensor can also, simultaneously operate as two independently addressed detectors using different modes of operation.

For sleeping risk applications the FC460PC triple multisensor will rapidly detect across the widest range of fire types including very slow smouldering fires typical of soft furnishings. By selecting resilient mode the FC460PC triple multisensor provides early detection with unrivalled levels of false alarm rejection, ideal for hotel applications.

### Installation Features

- Standard bases with multiple mounting options simplify installation.
- Unique 'park' position for commissioning and service procedures.
- Detector addressing programmed from the Service tool or FireClass control panels.
- Address flag—fixed to the base to prevent mix ups during service.
- Full range of remote installation and service tools.
- Dirty detector read-out can be viewed on the service tool or panel.

## FireClass 460 Addressable Detectors

### General Features

- Multiple fire detection modes.
- FireClass digital detection algorithms.
- CO fire detection technology.
- Up to 250 detectors per loop (dependant on panel choice).
- Remote detector verification & temperature read out.
- Highly featured service tool.
- Programmable alarm LED with 360° viewing angle.
- Fire and fault LED indication.
- Optional detector locking pin.
- Variety of sounder bases.
- Protected optical chamber screen.
- Robust coated electronics.
- Extended Service Life.
- EN54 and CPD approved.



#### FC460PH

With its ability to detect a wide range of fires, from flaming to smouldering types, the combined optical and heat multi-sensor detector is the preferred choice for a range of applications including light industrial, retail and office environments. It operates in a number of approved modes and sensitivities that can be dynamically selected to suit different environmental conditions.

#### FC460P

More benign environment where any potential fire will be slow burning can be protected using the optical detector. A choice of sensitivities gives this detector a broad range of applications.

#### FC460H

Complimenting the range is the heat sensor which can operate in fixed temperature and rate-of-rise modes. It is most often used in areas where high levels of dust are present or where the environment precludes the use of smoke detectors.

#### FC460PC

For life protection and when the environmental conditions are challenging, the multisensor smoke, heat and CO detector provides the ultimate in detector performance. It uses the three sensor elements in concert to accurately determine the presence of fire with false alarm rejection properties that make it the ideal choice for hotel bedrooms where steam from bathrooms is a common source of false alarms.

### Product Order Codes

<b>516.460.501</b>	FC460PH Combined Optical and Heat Detector
<b>516.460.502</b>	FC460P Optical Detector
<b>516.460.503</b>	FC460H Heat Detector
<b>516.460.504</b>	FC460PC Multi-Sensor Smoke, Heat and Carbon Monoxide Detector



## Addressable Detector Ancillaries

### General Features

- Optional conduit entry backboxes.
- Aesthetically discreet.
- Superior performance and reliability.
- Designed for rapid installation.
- Remote LED connection.
- Optional short circuit isolator in each base.
- Loop powered sounder bases.

### Product Order Codes



- 517.050.041** 4B 4" Detector Base  
**517.050.043** 4B-I 4" Isolator Base



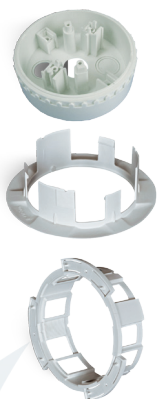
- 516.800.710** FC430SB Sounder Base  
**516.800.757** FC430LPSB Loop Powered Sounder Base  
**557.001.040.Y** Sounder Base White Cap



- 516.800.758** FC430LPASB Loop Powered Sounder/Beacon Base

### Ceiling Tile Adapter Kit

#### Product Description



The Time Saver Ceiling Tile Adaptor is used with the 4B 4" detector base snap fit base and consists of three parts, a bezel and clamp that are fitted to the ceiling tile and a back-box that carries the detector and base assembly.

The Ceiling Tile Adaptor requires a 127mm diameter hole to be cut into the ceiling tile to allow an easy fit and flawless finish.

### Product Order Codes

- 517.050.060** Ceiling Tile Adaptor Kit (consists of 1 x 517.050.056 and 1 x 517.050.057)  
**517.050.056** CTA-BB CTA Back Box  
**517.050.057** CTA-BC CTA Bezel and Clamp  
**517.050.058** CTA-AP CTA Adaptor Plate



## Addressable Call Points and Ancillaries

### General Features

- Integral LED indicator for easy identification of operation.
- Surface or Flush Mounting.
- Test key facility, speeds maintenance visits.
- Optional transparent hinged cover.
- Hazardous area models available.
- IP67 Waterproof models for external applications.

### Product Order Codes



**514.800.803**

FC420CP FireClass Addressable Manual Call Point without backbox

**515.001.021**

Standard red surface mounting backbox for MCP and CP indoor callpoint

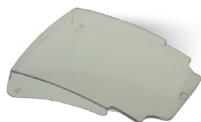
**10-115**

Callpoint Surface Mount Back Box for FC420CP with terminals



**514.800.804**

FC421CP FireClass Addressable Weatherproof Manual Call Point



**2501014**

Spare Glasses for Manual Call Point (Pack of 5)

**2501101**

Manual Call Point Plastic Hinged Cover

**2501040**

Spare Manual Call Point Keys (Pack of 10)

**515.001.127**

Spare Plastic Element for Manual Call Point



## Addressable Sounders

### General Features

- Loop powered-reduced installation costs.
- High sound output characteristics.
- Low current consumption.
- Clean lines, modern styling.
- Easy to install, low installation costs.
- Weatherproof units for outdoor use.
- Multiple tones and flash rate to suit individual requirements.
- Integral line isolator.

### Sounder Volume and Tone Control

FireClass addressable sounders provide a choice of 16 EN53 approved tones with selections to match the non-addressable sounders in the FireClass range. Tone, volume and beacon flash rates are set in software which means that either individual, zonal or global changes can be made with a single panel configuration download.

### Product Order Codes



**516.800.760** FC410LPSYR Loop Powered Symphoni Sounder Red



**516.800.761** FC410LPSYW Loop Powered Symphoni Sounder White



**516.800.762** FC410LPSY Loop Powered Symphoni Sounder Red IP65



**516.800.763** FC410LPAVR Loop Powered Symphoni Sounder/Beacon Red (\*)



**516.800.764** FC410LPAVW Loop Powered Symphoni Sounder/Beacon White (\*)



**516.800.766** FC410LPAV Loop Powered Symphoni Sounder/Beacon Red IP65 (\*)

(\*) The beacon in this product should be used for supplementary indication purposes only. In this case the device is not required to be used as a Visual Alarm Device (VAD) and EN54-23 is not relevant to its classification.

## Addressable Ancillary Modules

### Input Modules



**555.800.701(\*)** FC410MIM Mini Contact module providing one normally open or normally closed input. Designed to be small enough to mount inside the equipment housing being monitored.



**555.800.702(\*)** FC410CIM Contact Input module providing two normally open or normally closed inputs.



**555.800.706** FC410DDM Universal interface unit allowing connection of up to two conventional detection zones with detector removal and callpoint discrimination. Loop powered or 24Vdc.



**555.800.712(\*)** FC410DIM Conventional Zone monitor interface providing a connection of one detection circuit, requires a separate 24Vdc supply.



**555.800.766(\*)** FC410BDM Beam detector interface enabling a conventional beam detector to be powered and monitored by the FireClass loop.

### Output Modules



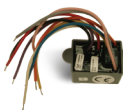
**568.800.703(\*)** FC410RIM Relay interface module providing one volt free relay contact.



**577.800.705(\*)** FC410SNM Sounder circuit controller allowing connection of external sounders or up to 2A @ 24Vdc or to provide a monitored output contact.



**577.001.023(\*)** SB520(\*) Allows the FC410SNM to power circuits up to 15A @ 24Vdc.



**568.800.004** HVR800 High Voltage Relay unit allowing for low current mains rated switching of up to 10A @ 250Vac.



## Addressable Ancillary Modules

### Multi-Function Modules



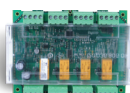
**555.800.763(\*)** FC410SIO Interface with single monitored input and single volt free change over relay contact.



**555.800.765** FC410MIO Interface with three monitored inputs and two volt free change over relay contacts.



**555.800.770** FC410QMO Quad monitor output unit provides four monitored output circuits suitable for 24Vdc conventional sounders.



**555.800.771** FC410QIO Quad input/output unit provides four monitored inputs and four relay outputs.



**555.800.773** FC410QRM Quad relay module provide four relay outputs.

### Other Modules/Accessories



**545.800.704** FC410LI Loop fault line isolation interface unit.



**555.800.067** BTM800 Interface module which allows the FC410BDM to be sited away from the beam detector but still easily connected.



**517.035.007** FC470CV Ancillary cover for use with modules.

**517.035.019** FC470DGBB White D/Gang B/Box.

**517.035.010** FC470DGB White D/Gang B/Box.

**517.035.011** FC470MDGB Metal D/Gang B/Box.

**517.035.015** FC470DLB Dry Line DBL B/Box.

**517.035.014** FC470FMB Steel D/Gang B/Box.

**547.004.002** DIN rail mounting bracket enabling a module mounted to the FC470CV to be DIN rail mounted.



**557.201.303** DIN rail mounting kit for FC410MIO.

**557.201.401** FCD800 IP65 Ancillary module housing.

**557.201.410** IP66 enclosure with DIN rail for QUAD modules

(\*) Ancillary cover and backbox needed

# 36

## FireClass Addressable Range

A new class of Fire Detection

# FireClass 490ST Service and Programming Tool



## General Features

- Read/Write the detector/ancillary address.
- Display temperature/CO levels and smoke obscuration.
- Programming of the LED.
- Testing the detector remote LED and control outputs.
- Perform the detector self verification test function.
- Display detector contamination level.
- Controlling ancillary outputs.
- Reading ancillary status.
- Power management options.

## Product Order Codes

<b>516.460.490</b>	Handheld Service and Programming Tool
<b>516.800.922</b>	Spare ancillary programming lead
<b>516.800.924</b>	Pack of Spare Pins (Pack of 10)
<b>516.800.923</b>	FC Service accessory kit (Plastic case complete with shoulder strap and car ancillary power)
<b>557.202.118</b>	FireClass Panel Download Lead
<b>PFNACBL0USB5M</b>	USB cable 5 meters Type A <-> Type A for FC501



## FCG - FireClass Graphical Fire Alarm Manager



### Overview

FireClass Graphics is a new client/server emergency management system and fire detection graphical user interface.

FireClass Graphics is a windows based graphical interface with a high resolution colour display and provides annunciation, status display incorporating the latest fireclass technology fire detection systems.

Utilising a combination of symbols, floor plans, pictures and text maps the precise location of all events are easily viewed by the user.

### General Features

- Real time visualization of control panel, loop and zone status etc.
- Multilevel map based on a tree structure.
- Access device data from any pages of the map.
- Supports all standard PC image file types (i.e. GIF, JPG, BMP)

### Product Order Codes

<b>557.202.721</b>	<b>FCG-001</b>	FireClass Graphics Single Panel Software
<b>557.202.722</b>	<b>FCG-002</b>	FireClass Graphics 1 - 4 Panel Software c/w TLI800EN Network Card and Power Supply Unit
<b>557.202.723</b>	<b>FCG-003</b>	FireClass Graphics 1 - 10 Panel Software c/w TLI800EN Network Card and Power Supply Unit
<b>557.202.724</b>	<b>FCG-004</b>	FireClass Graphics 1 - 24 Panel Software c/w TLI800EN Network Card and Power Supply Unit
<b>557.202.725</b>	<b>FCG-005</b>	FireClass Graphics Additional Software Licenses
<b>557.202.080</b>	<b>TLI800EN</b>	Network Interface Card
<b>557.200.039</b>	<b>TLI800ENG</b>	Network interface card with PSU



## Air Sampling Unit



### General Features

- Ideal for areas where access is restricted, harsh environments and areas where a point detector would be damaged.
- Powerful Fan.
- Up to two 100m pipe runs available.
- Pipes can be individually monitored for air flow with LED bar graph.
- FireClass loop and 24Vdc connections.
- Fault monitored via the FireClass loop.
- IP65 enclosure.
- Field serviceable air filters.
- Uses standard 25mm VESDA pipe and fittings.

### Product Order Codes

- 516.016.402** ICAM IAS460 Aspirated Smoke Dual Detector common fault monitor  
**516.016.401** ICAM IAS461 Aspirated Smoke Single Detector common fault monitor  
**516.016.303** ICAM Course Filter (Per Pack of 10)

### Overview

The ICAM Air Sampling Smoke Detection System provides a flexible solution to meet the unique needs of numerous applications including industrial spaces such as cable tunnels, tamper proof and unobtrusive requirements for special accommodation, or can simply be used to replace detectors in office environments.

The ICAM system actively draws air from the protected area through sampling holes in a pipe network. Sampled air is then filtered before being analyzed by up to two FC460 Series detectors.

The ICAM system is available in two configurations:

IAS460 twin inlet pipe configuration, which can be fitted with two detectors for monitoring one or two pipe runs.

IAS461 single inlet pipe configuration, which can be fitted with one detector.

The system utilises a high performance aspirator and software configurable flow monitoring circuitry. The air flow level is displayed on a ten element bar graph that can be adjusted for high and low flow thresholds, and flow failure is reported as a device fault.



## Air Sampling Accessories



**516.018.901 Pipe 25mm Diameter**  
VESDA aspirating pipes, printed along its length on opposite sides at 450mm intervals. 3 m length pipes. Order in multiples of 10 lengths.



**516.018.902 Socket 25mm**  
Straight socket for 25mm pipe. Order in multiples of 10.



**516.018.903 Socket Union 25mm**  
Socket union to facilitate servicing of pipework. Order in multiples of 1.



**516.018.904 Bend 25mm**  
90 degree Long Radius bend. Order in multiples of 5.



**516.018.905 Elbow 25mm**  
45 deg elbow. Order in multiples of 5.



**516.018.906 End Cap 25mm**  
End cap 25mm. Order in multiples of 5.



**516.018.907 Equal Tee 25mm**  
Equal Tee 25mm. Order in multiples of 5.



**516.018.908 Pipe Clip 25mm**  
Pipe Clip 25mm. Order in multiples of 10.



**516.018.909 Socket Adaptor 25mm to 3/4"**  
Socket adaptor, imperial to metric, to extend existing systems. Order in multiples of 5.



**516.018.910 Solvent Cement (0.25 L Tin)**

Solvent cement.



**516.018.911 Capillary Tube Conical Sample Point Assembly**

Capillary Tube Conical Sample Point Assembly. 25mm socket adaptor + 2m capillary tube (tube colour - red).



**516.018.912 Capillary Tube Flush Sample Point Assembly**

Capillary Tube Conical Sample Point Assembly. 25mm socket adaptor + 2m capillary tube (tube colour - red).



**516.018.915 Capillary Tube 10mm**

Capillary Tube 10mm 10mm o/d x 30m length (tube colour - red).



**517.017.005 Sampling Point Label (1 Reel)**

Capillary Tube 10mm 10mm o/d x 30m length (tube colour - red).



**517.017.006 Pipe Label (1 Reel)**

Pipe Label. Order in multiples of 100.

# 40

## FireClass Addressable Range

A new class of Fire Detection

### Beam Detection



#### General Features

- Motorised Auto Aligning.
- Up to 4 detectors per system controller.
- Each detector configurable from 8m to 100m.
- Integral laser.
- Auto align fast automatic beam alignment.
- Auto optimise building movement and contamination compensation.
- Low level system controller.
- Two wire interface from system controller to detector.
- Worldwide approvals including EN54:12 and UL268.

#### Product Order Codes

- 516.015.020** FireRay 5000 System (50M)
- 516.015.021** FireRay 5000 Detector Head (50M)
- 516.015.007** FireRay Reflector 100 x 100mm  
(4 reflectors are required for distances from 50 to 100M)
- 5000-005** Universal Mounting Bracket
- 5000-006** Flat Mounting Plate for 1 to 4 Prisms
- 5000-007** Prism Mounting Plate for 4 Prisms
- 5000-008** Prism Mounting Plate for 1 Prism
- 516.015.030** FireRay 3000 Optical Beam Smoke Detector
- 516.015.031** FireRay 3000 Extra Beam Set (Tx & Rx)
- 3000-201** FireRay 3000 Adjustable Mounting Bracket



Beam Detectors are conventional units unless used with FC410BDM.



## Power Supply Units and Batteries



### General Features

- Robust metal housing.
- Twin fused outputs.
- Temperature compensated charging.
- Deep discharge protection of batteries.
- Fault relay output.
- Comprehensive LED status indication.

### Product Order Codes

<b>2602011</b>	12 Volt 1.2 Ampere Battery Set
<b>2602001</b>	12 Volt 2.1 Ampere Battery Set
<b>2602003</b>	12 Volt 3 Ampere Battery Set
<b>2602012</b>	12 Volt 4.5 Ampere Battery Set
<b>2602004</b>	12 Volt 7 Ampere Battery Set
<b>2602005</b>	12 Volt 12 Ampere Battery Set
<b>2602006</b>	12 Volt 17 Ampere Battery Set
<b>2602007</b>	12 Volt 26 Ampere Battery Set
<b>2602008</b>	12 Volt 38 Ampere Battery Set
<b>2602009</b>	12 Volt 65 Ampere Battery Set
<b>2602010</b>	12 Volt 100 Ampere Battery Set
<b>2602013</b>	6 Volt 10 Ampere Battery Set
<b>557.200.731</b>	1.9A Boxed Power Supply Unit - EN54 / CPD Approval
<b>557.200.732</b>	PSUA17 5A Boxed Power Supply Unit (Will house up to 17Ah batteries) - EN54 / CPD Approval
<b>557.200.733</b>	PSUA38 5A Boxed Power Supply Unit (Will house up to 38Ah batteries) - EN54 / CPD Approval

## Installation Accessories

### General Features Address Flag

- Provides clear identification of address.
- Colour coded.
- Flag remains on base.



### General Features Ancillary Device Address Labels

- Colour coded for easy loop identification.
- Space for Zonal Label.
- Strong adhesive backing.



### General Features STOPPER

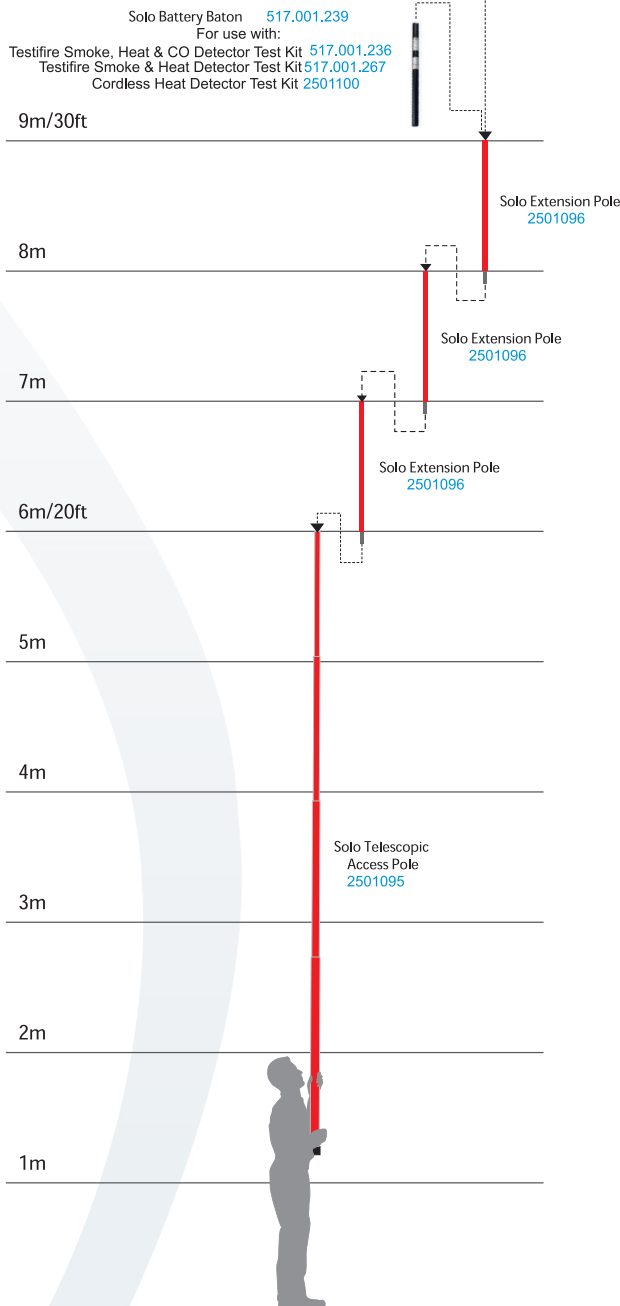
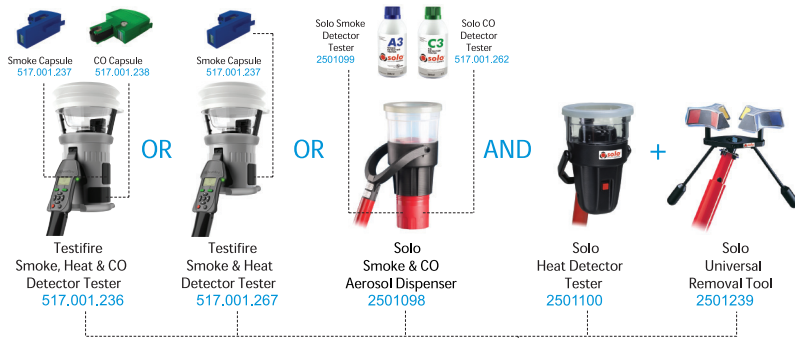
- Provides clear identification of address.
- Prevents accidental operation of callpoints.
- Strong polycarbonate construction.
- Optional break seal kit.
- Larger model design.
- Tamper resistant with inbuilt sounder.
- Weatherproof models.



## Product Order Codes

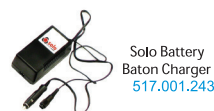
<b>516.800.915</b>	Detector addressed flags (Pack of 100)
<b>516.800.931</b>	Address flag, flag labels loop A— White
<b>516.800.932</b>	Address flag, flag labels loop B— Yellow
<b>516.800.933</b>	Address flag, flag labels loop C - Purple
<b>516.800.934</b>	Address flag, flag labels loop D— Green
<b>599.047.030</b>	Address labels 1—250 Loop A— White
<b>599.047.031</b>	Address labels 1—250 Loop B— Yellow
<b>599.047.032</b>	Address labels 1—250 Loop C— Purple
<b>599.047.033</b>	Address labels 1—250 Loop D— Green
<b>599.047.011</b>	Zone labels—Zone 1-16
<b>599.047.012</b>	Zone labels—Zone 17-32
<b>599.047.013</b>	Zone labels—Zone 33-48
<b>599.047.014</b>	Zone labels—Zone 49-64
<b>515.001.029</b>	Standard STOPPER Flush Mount
<b>515.001.030</b>	Standard STOPPER Surface Mount
<b>515.001.031</b>	Standard STOPPER Flush Mount with Sounder
<b>515.001.032</b>	Standard STOPPER Surface Mount with Sounder
<b>515.001.034</b>	STOPPER II Model Surface Mount
<b>515.001.035</b>	STOPPER II Model Surface Mount Weatherproof
<b>515.001.036</b>	STOPPER Model Surface Mount Weatherproof
<b>515.001.033</b>	Break Seal Kit (Pack of 1)

### Detector Test Equipment



#### Solo Poles Access Height

Part No.	Access Height (approx. max.)
2501095	6m (20ft)
2501095 + 2501096 (x 1)	7m (23ft)
2501095 + 2501096 (x 2)	8m (26.25ft)
2501095 + 2501096 (x 3)	9m (30ft)







For more information about  
FireClass fire detection technology visit:  
[www.fireclass.net](http://www.fireclass.net)  
or contact us at  
[fireclasssales@tycoint.com](mailto:fireclasssales@tycoint.com)

FireClass locations at:

Hillcrest Business Park  
Cinderbank, Dudley  
West Midlands  
DY2 9AP  
United Kingdom

Tel: +44 (0)1384 453985  
Fax: +44 (0)1384 458972

Unit 6, West Point Enterprise Park  
Clarence Avenue  
Trafford Park  
Manchester  
M17 1QS  
United Kingdom



FireClass and any other product names listed above are marks and/or registered marks.  
Unauthorized use is strictly prohibited.  
Copyright © 2013 Tyco Fire Products LP. All rights reserved.

**tyco**  
Fire Protection Products